

# Home Mark Homes Kitchen Cabinet Sales Event

*Welcome Home to Savings!!*



## Premium Cabinets ~~Upgrades~~ *Now Standard!*

Choose from models below



Honey Maple



French Antique Glaze



Vanilla Maple Glaze



Mocha Maple



Chocolate Maple



Cherry Maple

## Why Home Mark Homes?

Let our professional design staff customize your new modular home at no additional cost.

- ✓ Custom Modular or Custom Site Built Homes
- ✓ Remodeling & Add-A-Level also our speciality
- ✓ Andersen Windows-**STANDARD**
- ✓ Kitchen Cabinet upgrades-**STANDARD**
- ✓ Standard Granite countertops in many models
- ✓ Award-winning homes designed to your specifications
- ✓ Serving Ocean, Monmouth & surrounding counties since 1978
- ✓ **Financing Available**

Call for an appointment today@ **1-800-262-7884**

To view our current models visit our website @[www.homemarkhomes.com](http://www.homemarkhomes.com)  
To receive information please e-mail us [info@homemarkhomes.com](mailto:info@homemarkhomes.com)





10'-11" 18'-2" NO 10'-3" 18'-5" MASTER 17'-9" x

6'-0" 8" 11'-0 1/2 18'-1

# *The Spartan*

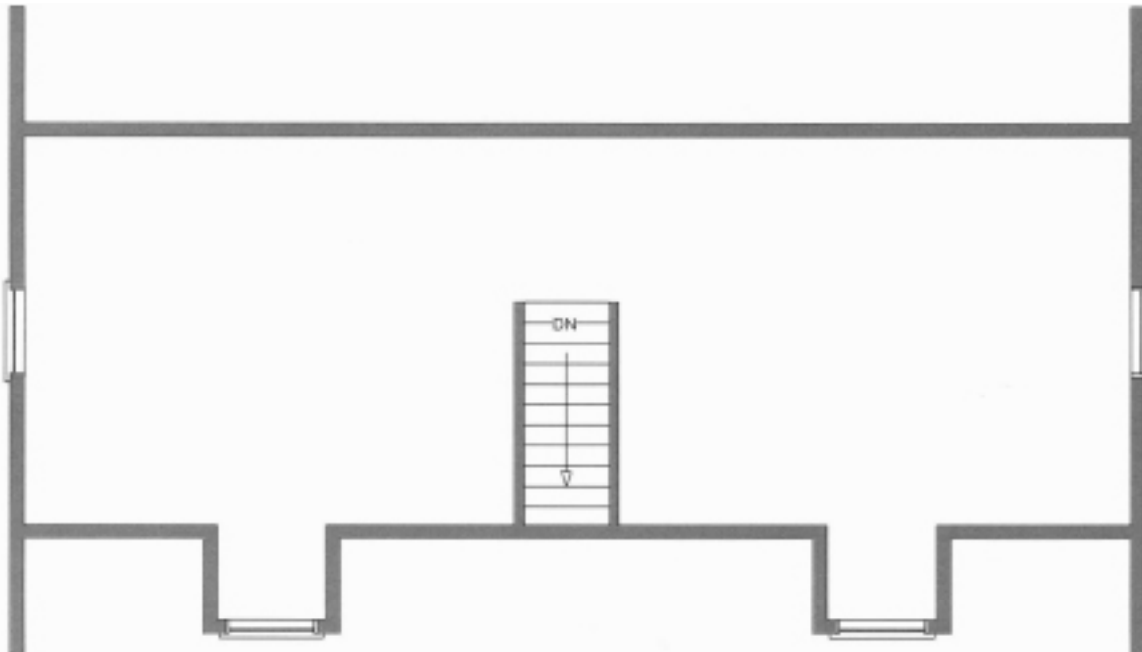
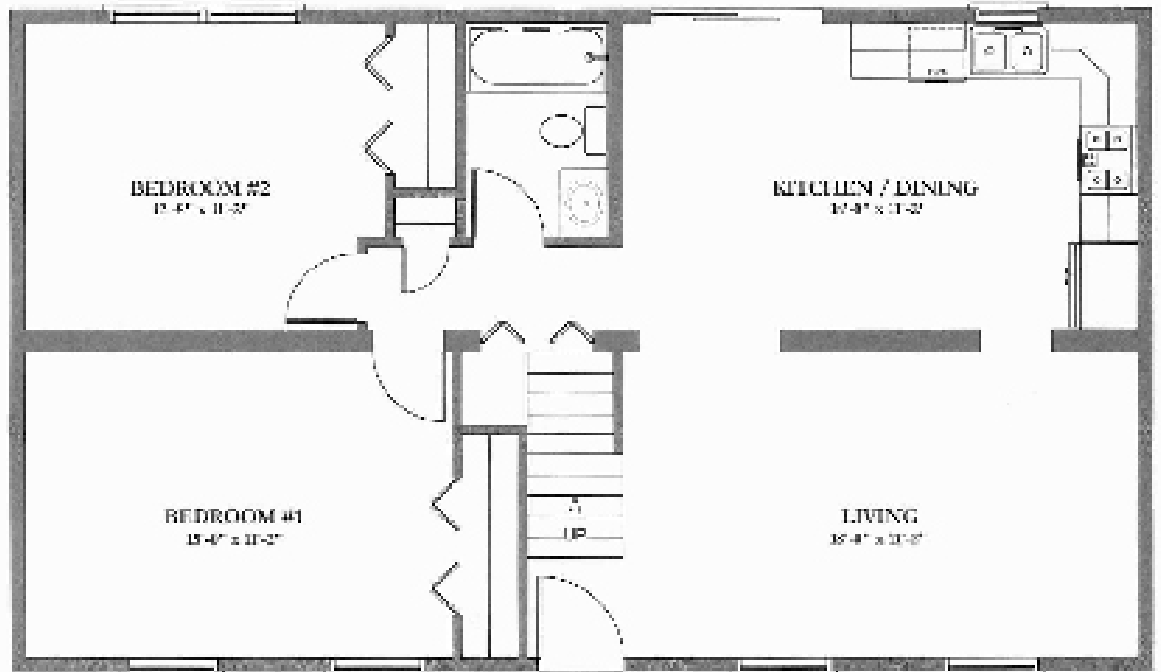
**Cape Code Style Ranch  
Starting at \$129,900**

\*Optional features may be shown with photo



# The Spartan

- Cape Code Style Home
- 2 Bedrooms
- 1 Bath
- Spacious Living
- Optional Garage & Dormers





# *The Chatham*

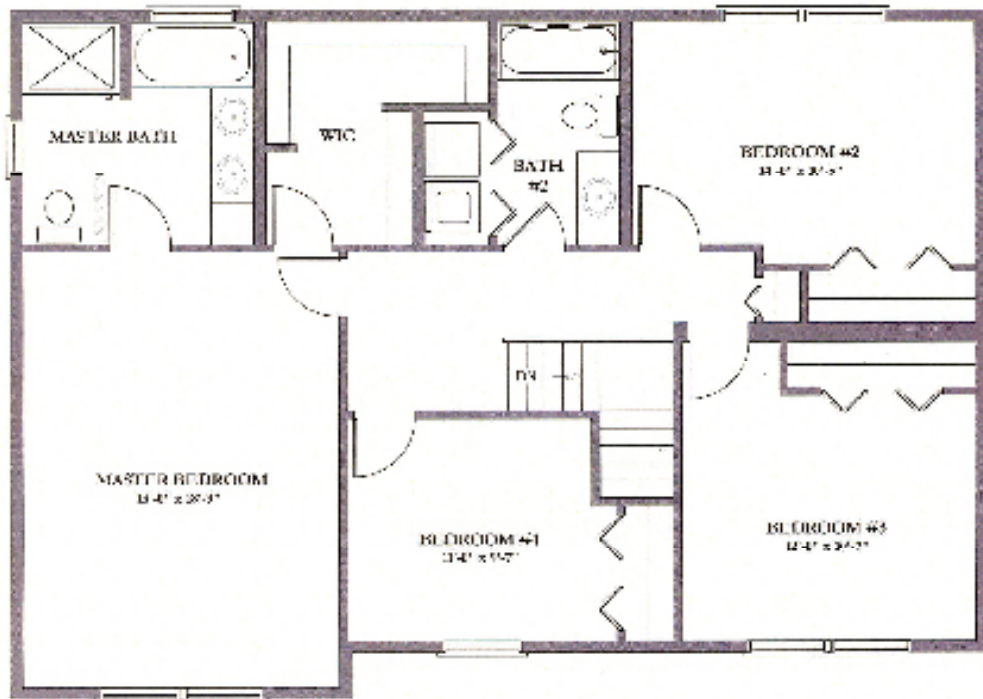
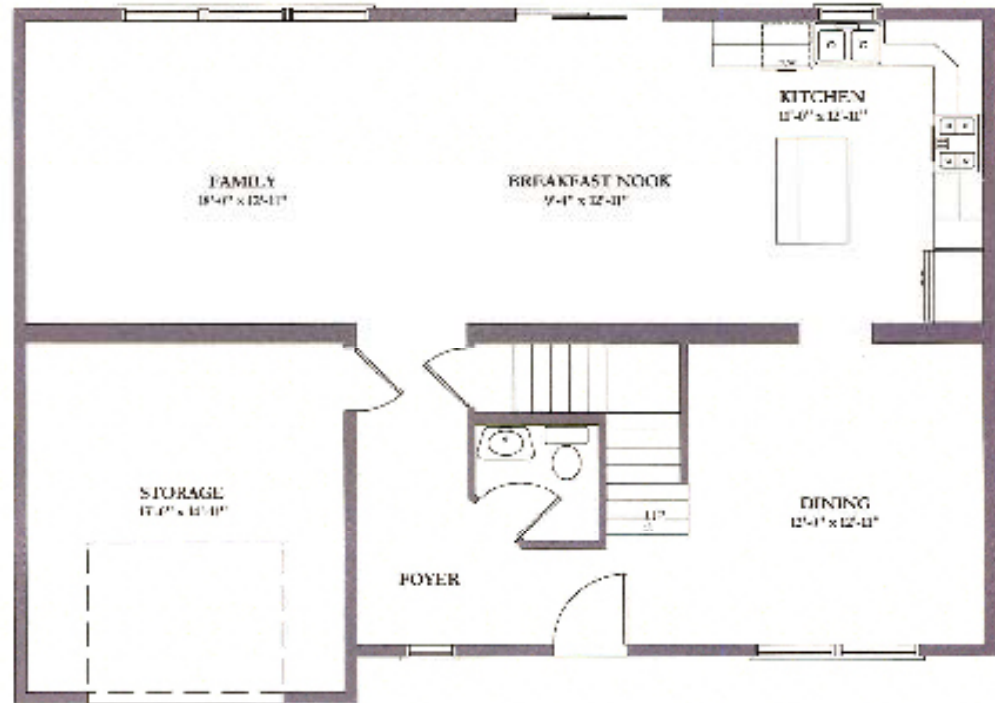
**Two Story Colonial  
Starting at \$199,900**

\*Optional features may be shown with photo



# The Chatham

- Two Story Colonial
- 4 Bedrooms
- 2.5 Baths
- Large Master Bedroom





10'-11" 18'-2"

18'-5"

NO  
10'-3"

STEP  
17'-9" x

# The Hawthorne

**Narrow Lot Beach Victorian  
Starting at \$179,000**

\*Optional features may be shown with photo



**Home Mark Homes**

11'-0 1/2"

18'-1"

6'-0"

8"

4

# The Hawthorne

- Narrow L of Beach Victorian
- 3 Bedrooms
- 2.5 Bath
- Spacious Living Room
- Optional Front Porch

